

Drawing Index:

Type A, Site Wall Sign	GR-Aa, GR-Ab, GR-Ac, GR-Ad
Type B, Primary Directional	GR-Ba, GR-Bb
Type C, Secondary Directional	GR-Ca, GR-Cb, GR-Cc, GR-Cd, GR-Ce
Type D, Channel Letters	GR-Da, GR-Db (NOT USED), GR-Dc
Type DH, Dimensional Letters	GR-DHa, GR-DHb, GR-DHc
Type G, Channel Letters	GR-Ga
Site Location Plan & Photo Elevations (under separate cover)	GR-01, GR-02

Color Index:

40%	70%	100%	P1 - PMS 288, Blue
			P2 - PMS 7406, Yellow Gold
			P3 - PMS 186, Red
			P4 - Matthews Paint MP30136, Aluminum
			P5 - White
			V1 - 3M Scotchcal Vinyl Film, White #3650-10
			V2 - 3M Scotchlite Reflective Vinyl Film, White #680-10
			V3 - 3M Scotchcal Vinyl Film, Black #3650-12
			V4 - 3M Scotchlite Reflective Vinyl Film, Yellow #680-71
			V5 - 3M Scotchlite Reflective Vinyl Film, Red #680-72
			V6 - 3M Scotchcal Translucent Vinyl Film, Red #3630-33

	Mitchell Associates Inc. One Avenue of the Arts Wilmington, DE 19801 302.594.9400 www.mitchellai.com
Architect	AECOM 3101 Wilson Boulevard, Suite 900 Arlington, Virginia 22201 703.682.1637
Civil Engineering Landscape Architect	Rodgers Consulting, Inc. 19847 Century Boulevard, Suite 200 Germantown, Maryland 20878 301.948.4700

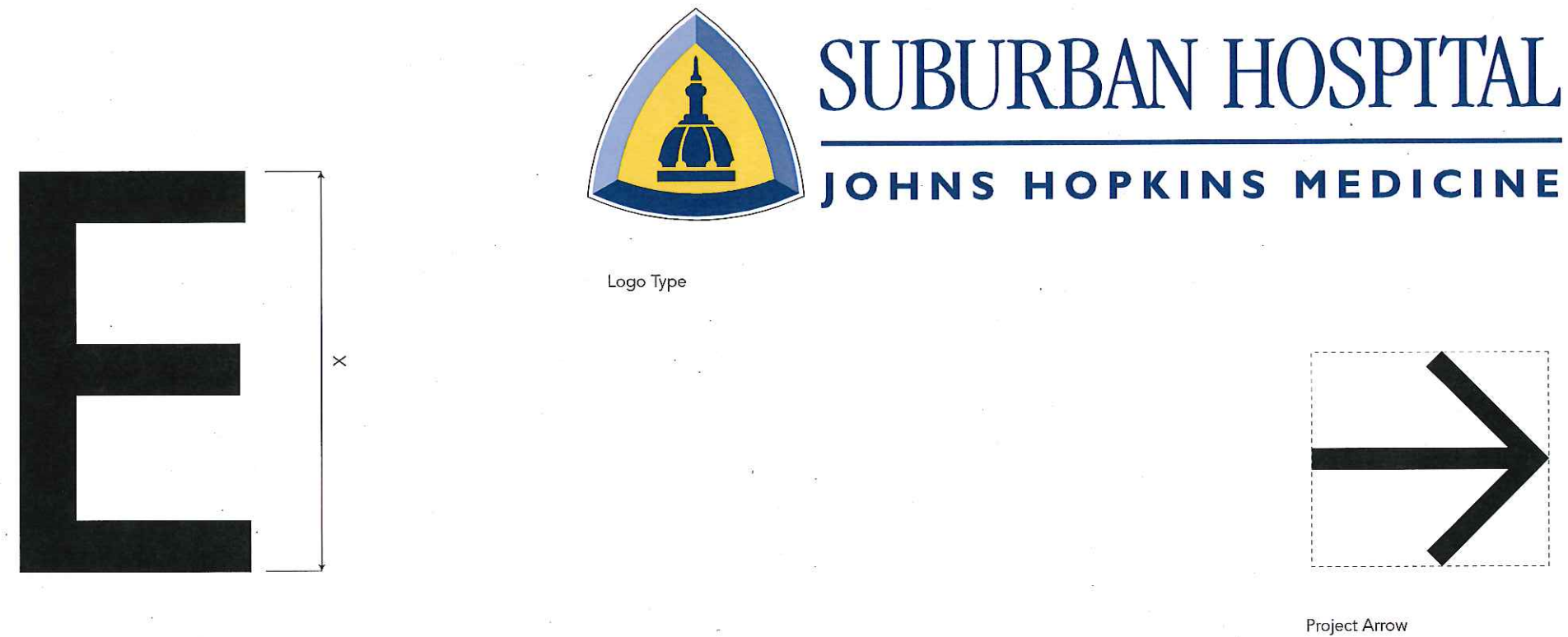
Project No. 14055.00

Suburban Hospital

8600 Old Georgetown Road

Bethesda, Maryland 20814

Mark	Description	Date



ABCDEFGHIJKLMNOPQRSTUVWXYZ &
 abcdefghijklmnopqrstuvwxyz | 1234567890

Gill Sans Regular

ABCDEFGHIJKLMNOPQRSTUVWXYZ &
 abcdefghijklmnopqrstuvwxyz | 1234567890

Gill Sans Bold



Environmental
Graphics

Mitchell Associates Inc.
 One Avenue of the Arts
 Wilmington, DE 19801
 302.594.9400
 www.mitchellai.com

Architect

AECOM
 3101 Wilson Boulevard, Suite 900
 Arlington, Virginia 22201
 703.682.1637

Civil Engineering
Landscape Architect

Rodgers Consulting, Inc.
 19847 Century Boulevard, Suite 200
 Germantown, Maryland 20878
 301.948.4700

Project No. 14055.00

Suburban Hospital
 8600 Old Georgetown Road
 Bethesda, Maryland 20814

Mark	Description	Date

Dimensions & shapes of all elements as shown on GR-Aa through GR-Ad.

A Panel: 6mm aluminum composite panel, radiused, with painted face. Mitre frame 4 sides with 3/4" x 1 1/2" anodized aluminum angle. 0.25" water jet-cut plate aluminum letters, arrow, and logo shield, painted. Surface mount with stainless steel studs and silicone adhesive. Frisket and paint logo shield graphics.

Typography: Gill Sans Bold; 3.33" Cap Height (Based on "E")

B Masonry Wall: N.I.C., By Others

Illumination: N.I.C., By General Contractor; KIM Lighting; 4348P70 / 32L4KUV; 49" LED Wall Sign. Lighter; 277V, 74W, 3100mA; 4200K Color Temp, 3959 Lumens. Locate and aim centered on graphic panel at required height and distance for even illumination. Shield beam spread to prevent light spill past top and sides of site wall.

Note: Sign Contractor is responsible for field verifying all as-built conditions that may impact installation & maintenance and indicate on shop drawings for review and approval.



Permitted § 59-6.7.8.B.2

Mitchell
Environmental
Graphics

Mitchell Associates Inc.
One Avenue of the Arts
Wilmington, DE 19801
302.594.9400
www.mitchellai.com

Architect **AECOM**
3101 Wilson Boulevard, Suite 900
Arlington, Virginia 22201
703.682.1637

**Civil Engineering
Landscape Architect** **Rodgers Consulting, Inc.**
19847 Century Boulevard, Suite 200
Germantown, Maryland 20878
301.948.4700

Suburban Hospital
8600 Old Georgetown Road
Bethesda, Maryland 20814
Project No. 14055.00

Mark	Description	Date

A Site Wall Identification

Graphic Series - Design Intent Documents

Original Issue: 04.27.2015

Sheet

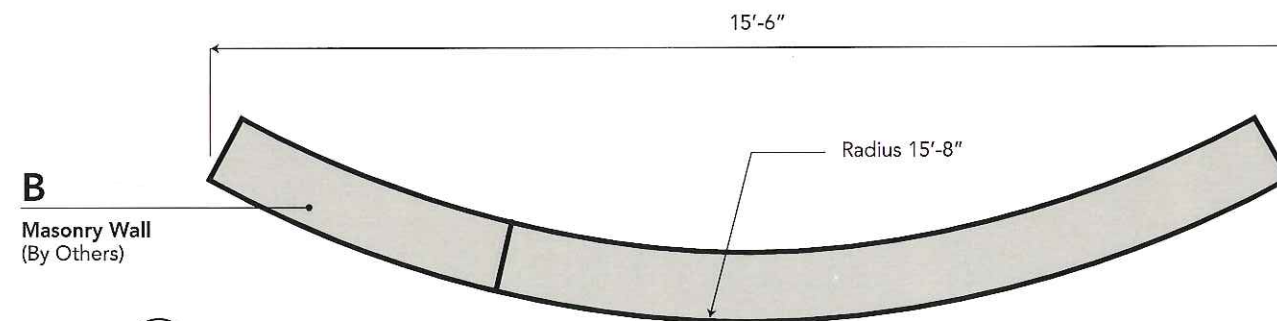
GR-Aa



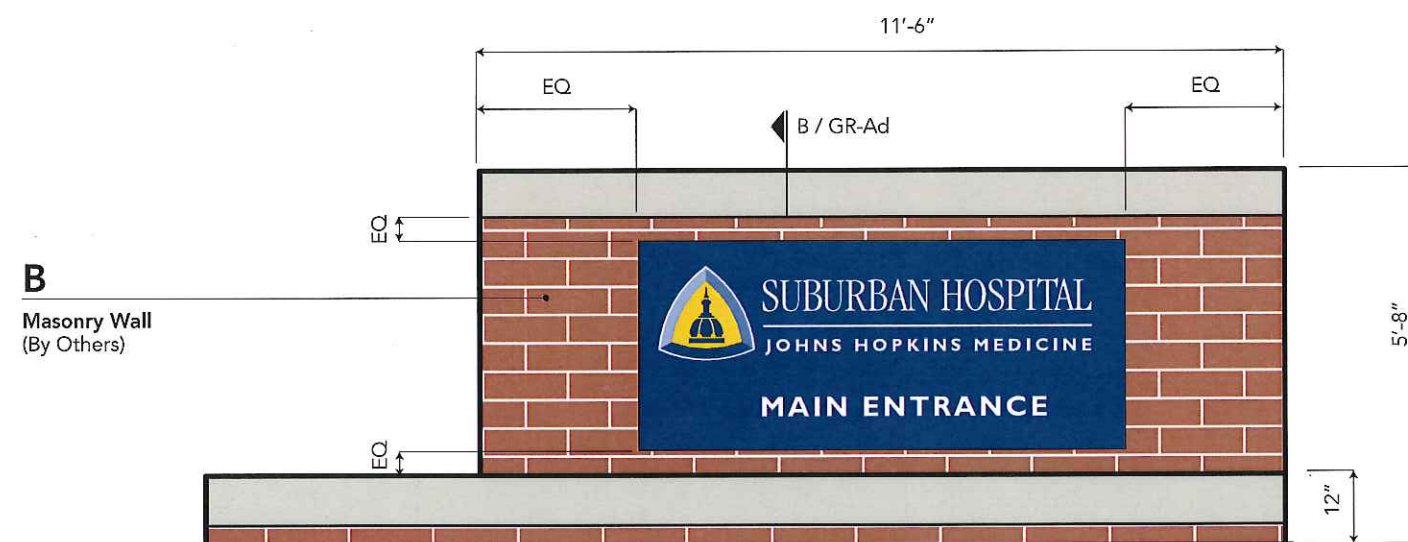
3 Front View / 3/4"=1'-0"



A Section Detail / 3"=1'-0"



2 Plan View / 3/8"=1'-0"



1 Elevation / 3/8"=1'-0"
Location A.01
Sign Area = 21.0 s/f

Dimensions & shapes of all elements as shown on GR-Aa through GR-Ad.

A Panel: 6mm aluminum composite panel, radiused, with painted face. Mitre frame 4 sides with 3/4" x 1 1/2" anodized aluminum angle. 0.25" water jet-cut plate aluminum letters, arrow, and logo shield, painted. Surface mount with stainless steel studs and silicone adhesive. Frisket and paint logo shield graphics.

Typography: Gill Sans Bold; 3.33" Cap Height (Based on "E")

B Masonry Wall: N.I.C., By Others

Illumination: N.I.C., By General Contractor; KIM Lighting; 4348P70 / 32L4KUV; 49" LED Wall Sign Lighter; 277V, 74W, 3100mA; 4200K Color Temp, 3959 Lumens. Locate and aim centered on graphic panel at required height and distance for even illumination. Shield beam spread to prevent light spill past top and sides of site wall.

Note: Sign Contractor is responsible for field verifying all as-built conditions that may impact installation & maintenance and indicate on shop drawings for review and approval.



Permitted
§ 59-6.7.8.B.2

Mitchell
Environmental
Graphics

Mitchell Associates Inc.
One Avenue of the Arts
Wilmington, DE 19801
302.594.9400
www.mitchellai.com

Architect **AECOM**
3101 Wilson Boulevard, Suite 900
Arlington, Virginia 22201
703.682.1637

**Civil Engineering
Landscape Architect** **Rodgers Consulting, Inc.**
19847 Century Boulevard, Suite 200
Germantown, Maryland 20878
301.948.4700

Suburban Hospital
8600 Old Georgetown Road
Bethesda, Maryland 20814
Project No. 14055.00

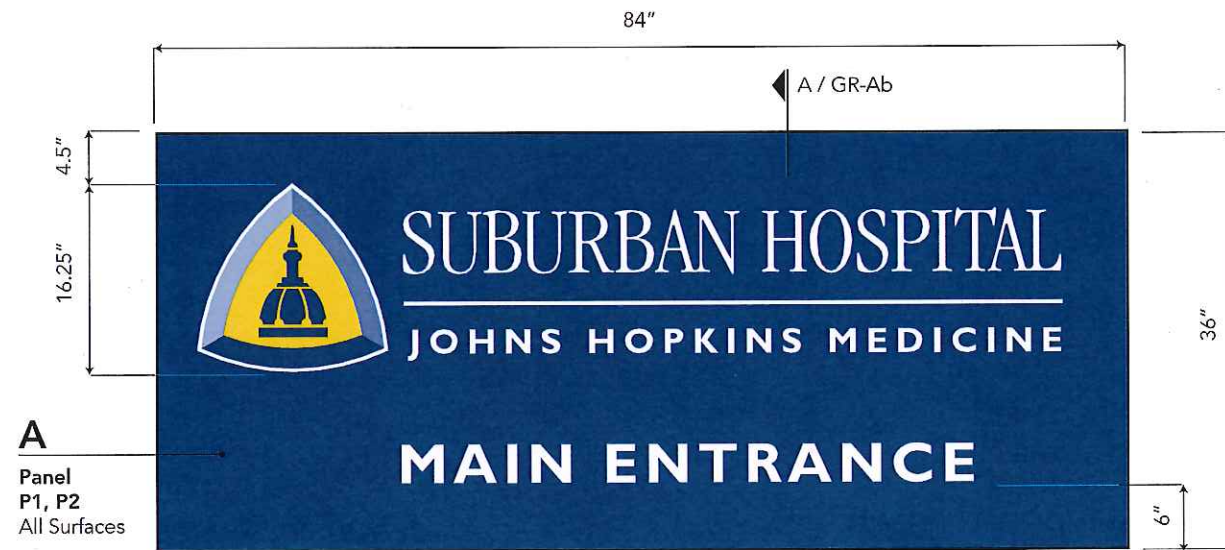
Mark	Description	Date

A Site Wall Identification

Graphic Series - Design Intent Documents

Original Issue: 04.27.2015

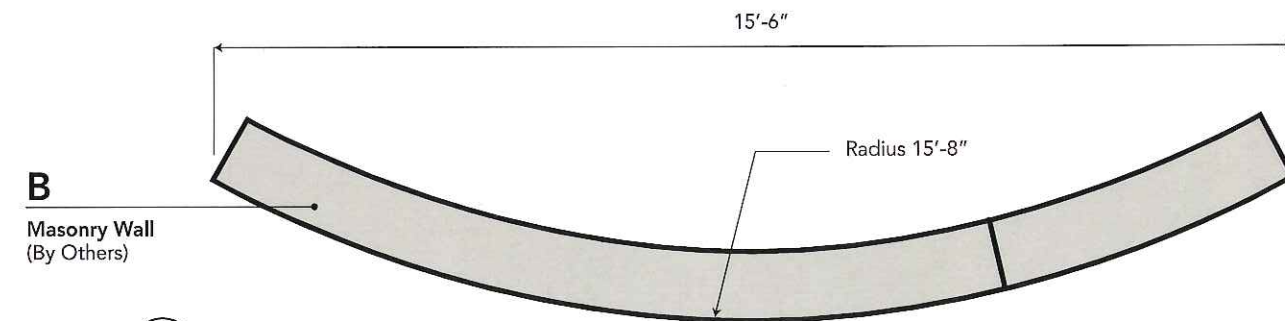
Sheet
GR-Ab



A
Panel
P1, P2
All Surfaces

3 Front View / 3/4"=1'-0"

A Section Detail / 3"=1'-0"



B
Masonry Wall
(By Others)

2 Plan View / 3/8"=1'-0"



B
Masonry Wall
(By Others)

1 Elevation / 3/8"=1'-0"
Location A.02
Sign Area = 21.0 s/f

Dimensions & shapes of all elements as shown on GR-Aa through GR-Ad.

A Panel: 6mm aluminum composite panel, radiused, with painted face. Mitre frame 4 sides with 3/4"x 1 1/2" anodized aluminum angle. 0.25" water jet-cut plate aluminum letters, arrow, and logo shield, painted. Surface mount with stainless steel studs and silicone adhesive. Frisket and paint logo shield graphics.

Typography: Gill Sans Bold; 3.33" Cap Height (Based on "E"); Arrow, 5 5/8"x 6 1/4".

B Masonry Wall: N.I.C., By Others

Illumination: N.I.C., By General Contractor; KIM Lighting; 4348P70 / 32L4KUV; 49" LED Wall Sign Lighter; 277V, 74W, 3100mA; 4200K Color Temp, 3959 Lumens. Locate and aim centered on graphic panel at required height and distance for even illumination. Shield beam spread to prevent light spill past top and sides of site wall.

Note: Sign Contractor is responsible for field verifying all as-built conditions that may impact installation & maintenance and indicate on shop drawings for review and approval.

Variance


Environmental
Graphics

Mitchell Associates Inc.
One Avenue of the Arts
Wilmington, DE 19801
302.594.9400
www.mitchellai.com

Architect **AECOM**
3101 Wilson Boulevard, Suite 900
Arlington, Virginia 22201
703.682.1637

**Civil Engineering
Landscape Architect** **Rodgers Consulting, Inc.**
19847 Century Boulevard, Suite 200
Germantown, Maryland 20878
301.948.4700

Suburban Hospital
8600 Old Georgetown Road
Bethesda, Maryland 20814
Project No. 14055.00

Mark	Description	Date

A Site Wall Identification

Graphic Series - Design Intent Documents

Original Issue: 04.27.2015

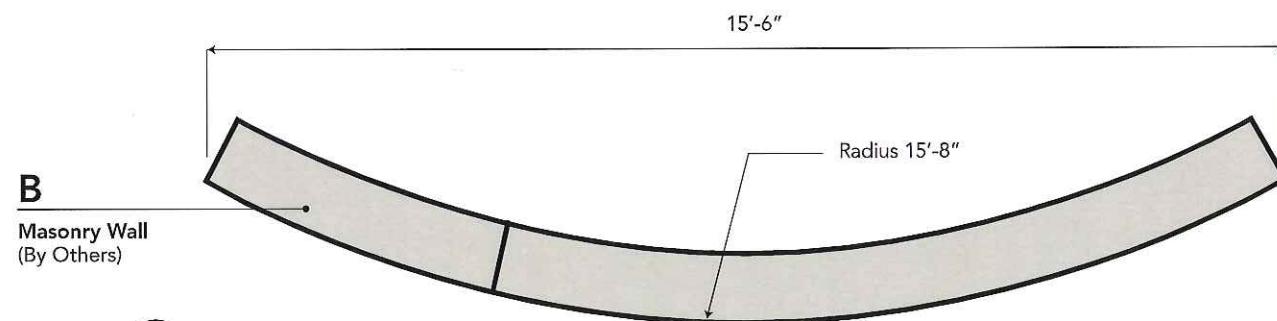
Sheet

GR-AC

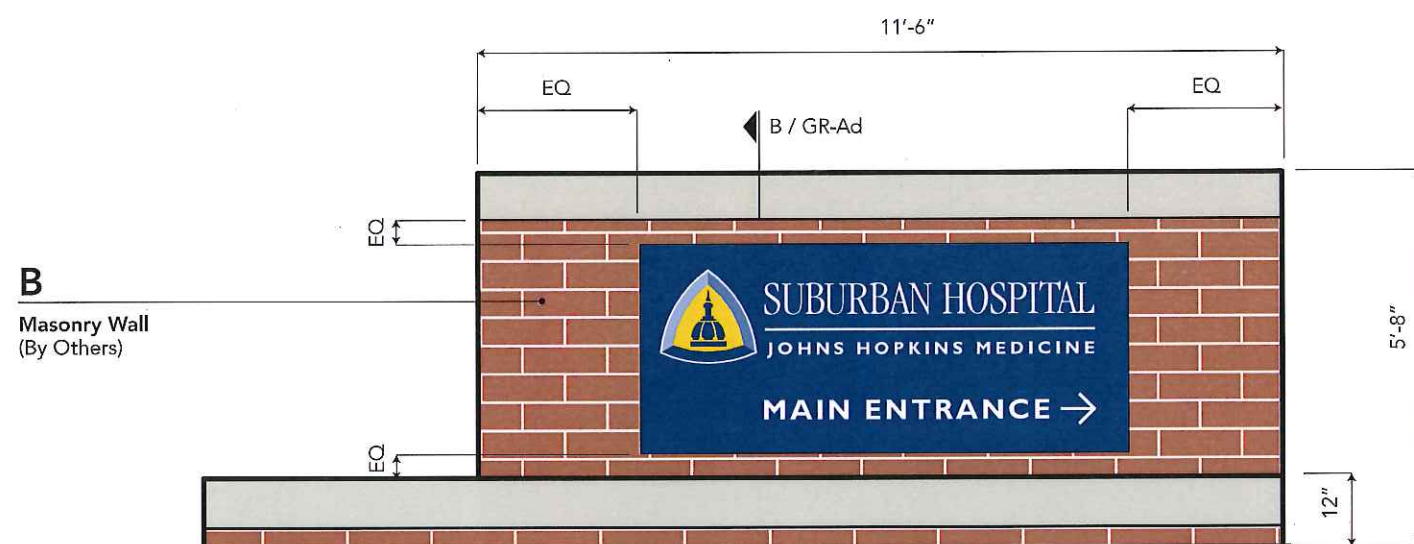


3 Front View / 3/4"=1'-0"

A Section Detail / 3"=1'-0"

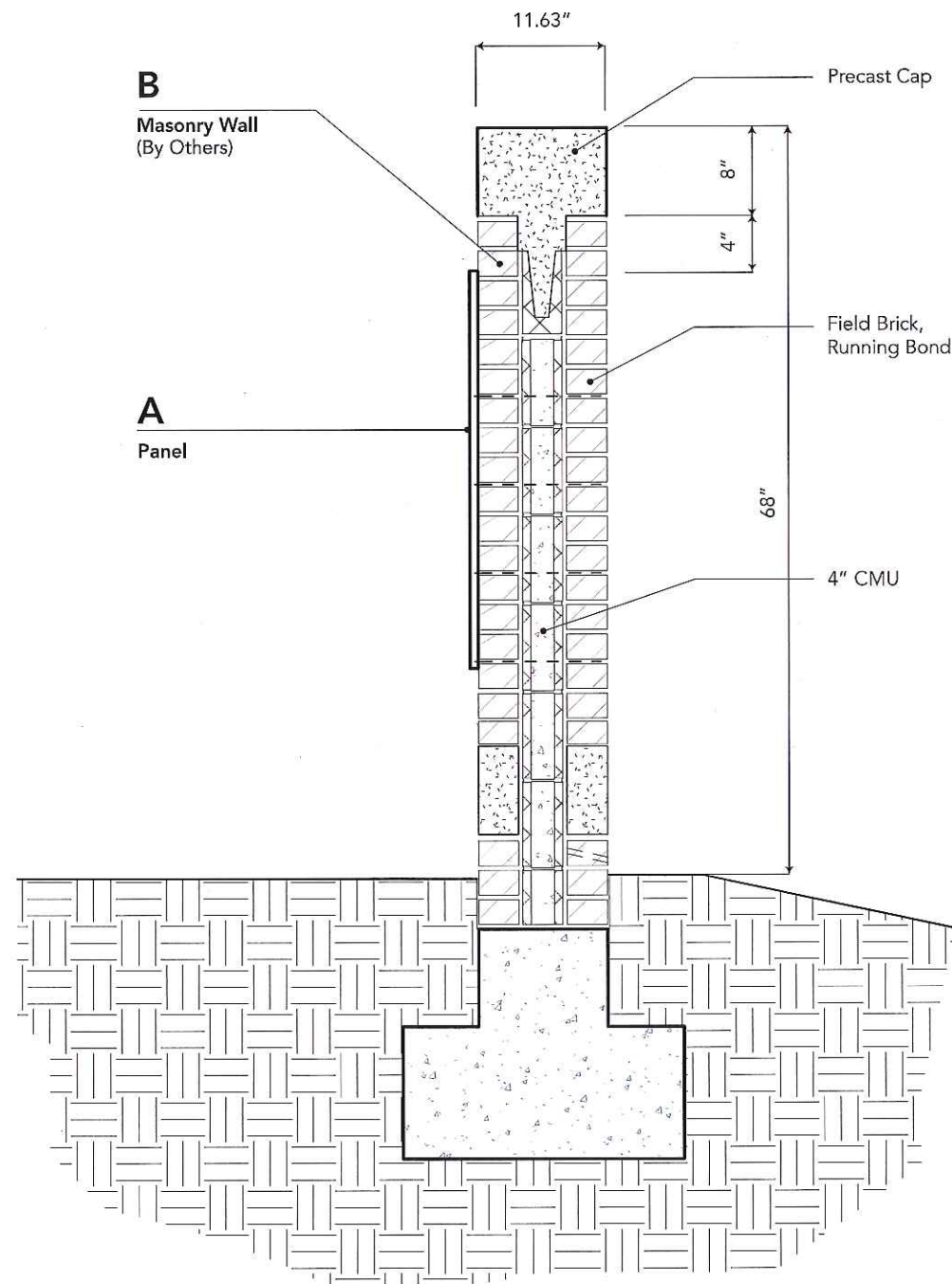


2 Plan View / 3/8"=1'-0"

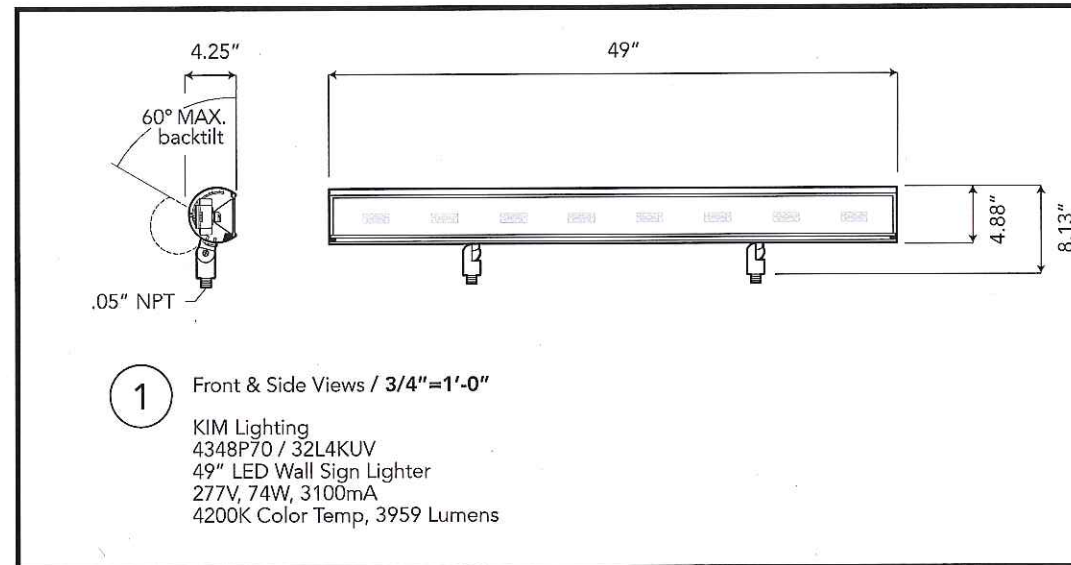


1 Elevation / 3/8"=1'-0"
Location A.03
Sign Area = 21.0 s/f

Dimensions & shapes of all elements as shown on GR-Aa through GR-Ad.



B Section / 3/4"=1'-0"



FOR REFERENCE ONLY - N.I.C.
LIGHT FIXTURE AND INSTALLATION BY GENERAL CONTRACTOR

 <div> <div>Environmental Graphics</div> </div>	<div> <div>Mitchell Associates Inc.</div> <div>One Avenue of the Arts</div> <div>Wilmington, DE 19801</div> <div>302.594.9400</div> <div>www.mitchellai.com</div> </div>	
	Architect	<div>AECOM</div> <div>3101 Wilson Boulevard, Suite 900</div> <div>Arlington, Virginia 22201</div> <div>703.682.1637</div>
	Civil Engineering Landscape Architect	<div>Rodgers Consulting, Inc.</div> <div>19847 Century Boulevard, Suite 200</div> <div>Germantown, Maryland 20878</div> <div>301.948.4700</div>
<div> <div>Suburban Hospital</div> <div>8600 Old Georgetown Road</div> <div>Bethesda, Maryland 20814</div> </div>		
Project No. 14055.00		
Mark	Description	Date